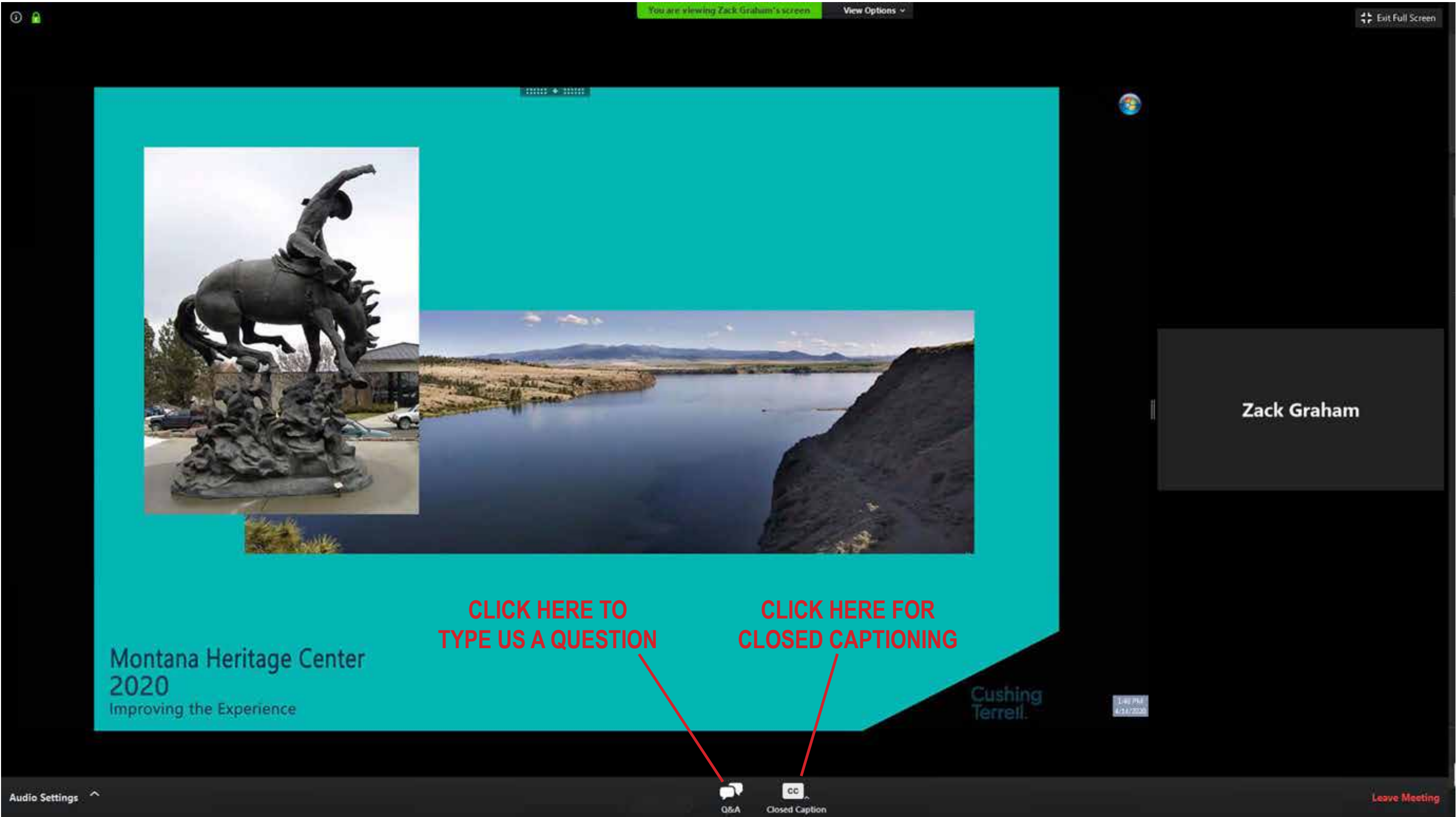




Hello!

First, a little technical orientation...



Team:

Jennifer James
Russ Katherman
Bruce Whittenberg

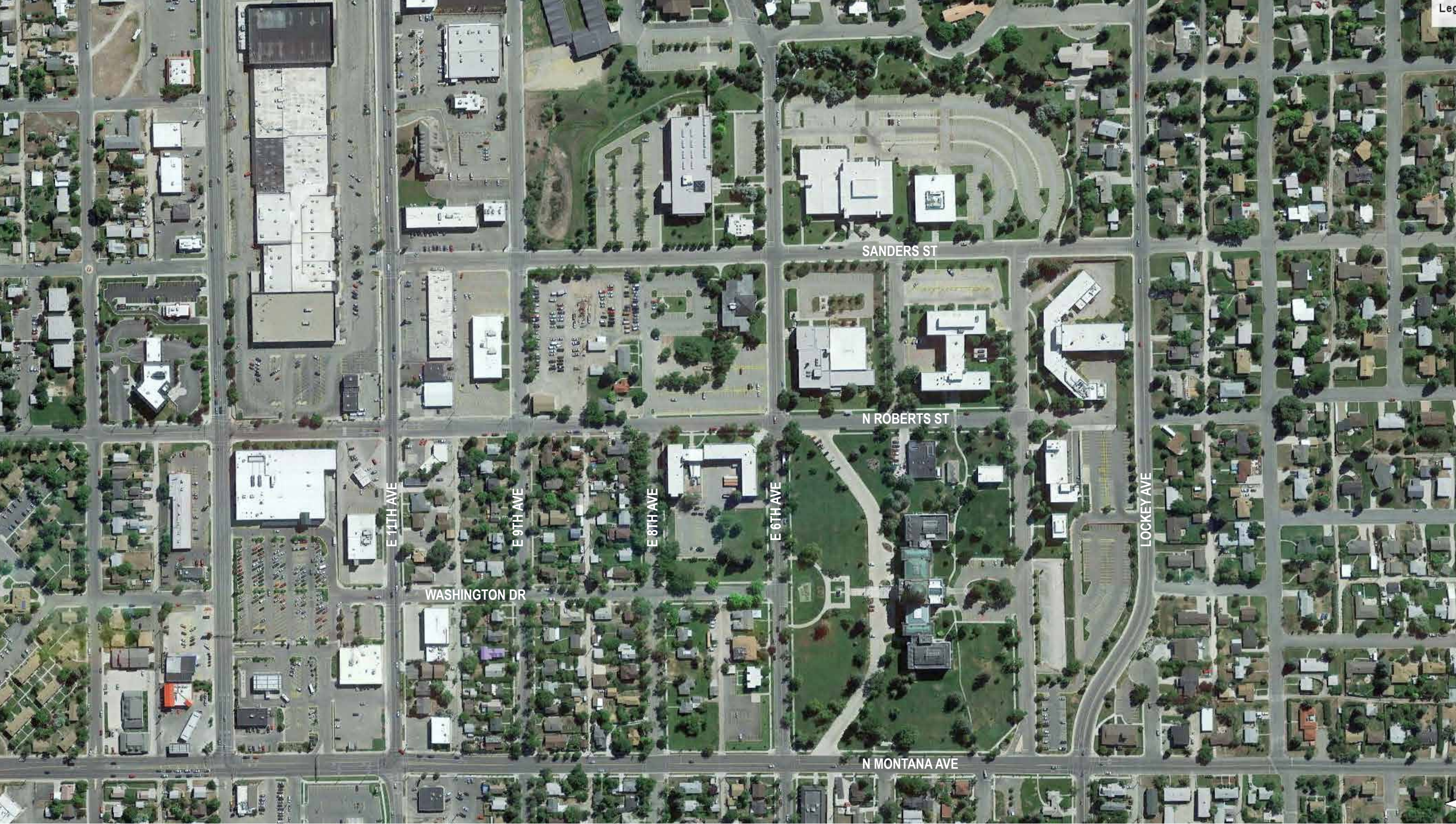
Design Team:

- David Koel
- Zack Graham
- Anthony Houtz
- Marty Byrnes

Host, Project Liaison
DoA Administrator
Montana Historical Society Director

Cushing Terrell Principal, Lead Design Architect
Cushing Terrell Civil Engineer
Cushing Terrell Design Architect
Cushing Terrell Principal

To learn more about the project please visit our website: www.MontanaMuseum.org
Or send an email to: HeritageCenter@mt.gov



Montana Heritage Center : 2020 Design Approach



Where did we leave off in 2010?

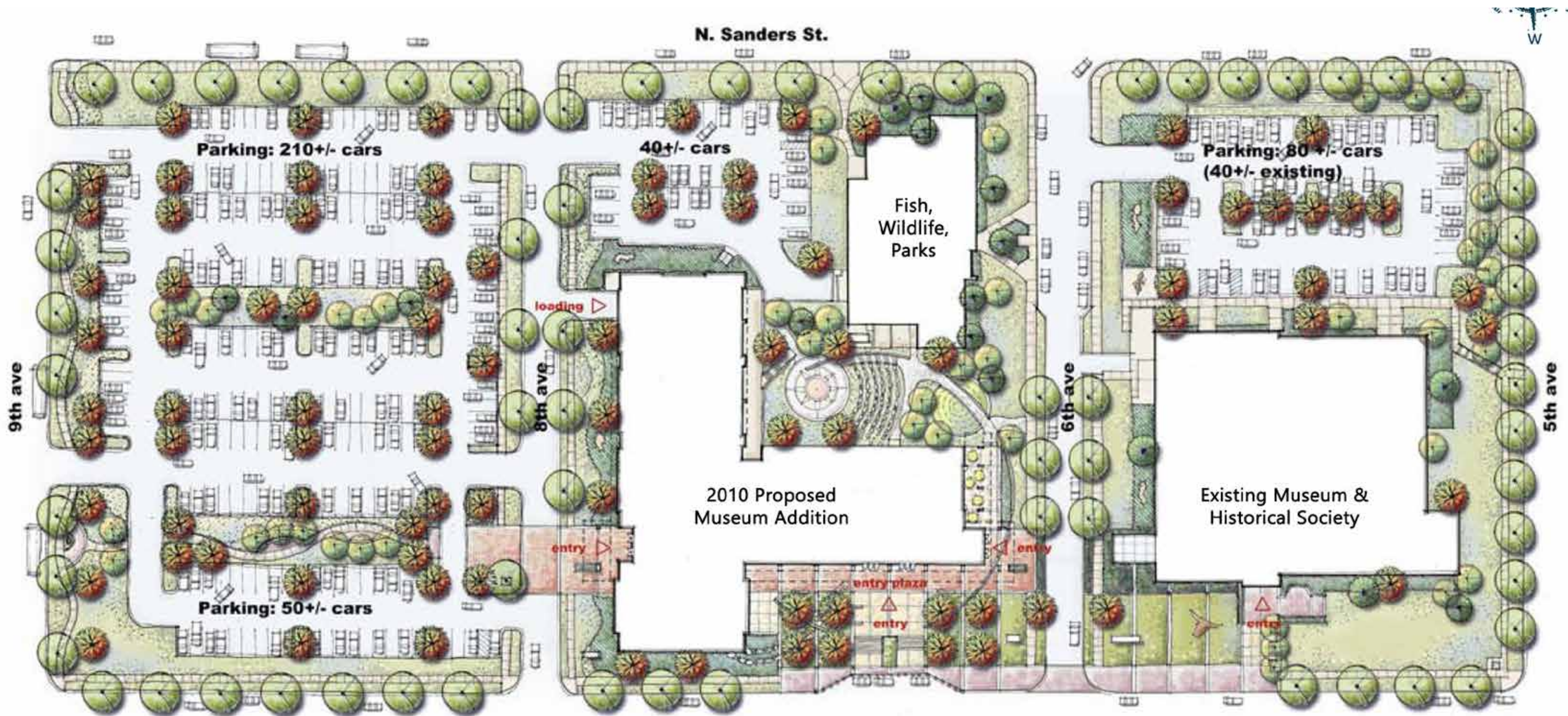
Montana Heritage Center

Cushing
Terrell®

The 2010 Vision

The Vision for the new Montana Heritage Center is that it will be an inspiring Center for discovery, knowledge, and resources; it will be a welcoming Visitor Center to the Capitol Campus, inviting and accessible for patrons and visitors; it will enhance the architectural presence of the State Capitol and grounds, creating a dynamic synergy within the campus; and it will represent the past, present, and future of Montana.

Establish **safe, healthy, efficient, flexible** and interactive working environments
Match the Montana scenery - grandeur, diversity of the landscape, and of its people
Represent the State and its nature - sweeping, diverse, grand
Reflect Montana's spirit - survival, tenacity, endurance
Express a strong connection to the Capitol
Create a synergy within the Campus
Serve the entire State of Montana



Design Concerns :

WHICH BUILDING IS THE DESTINATION?

TOO MANY ENTRIES TO CONTROL

NEED MORE PARKING

NEED RV PARKING

COURTYARD IS HIDDEN

IT CROWDS THE FWP BUILDING

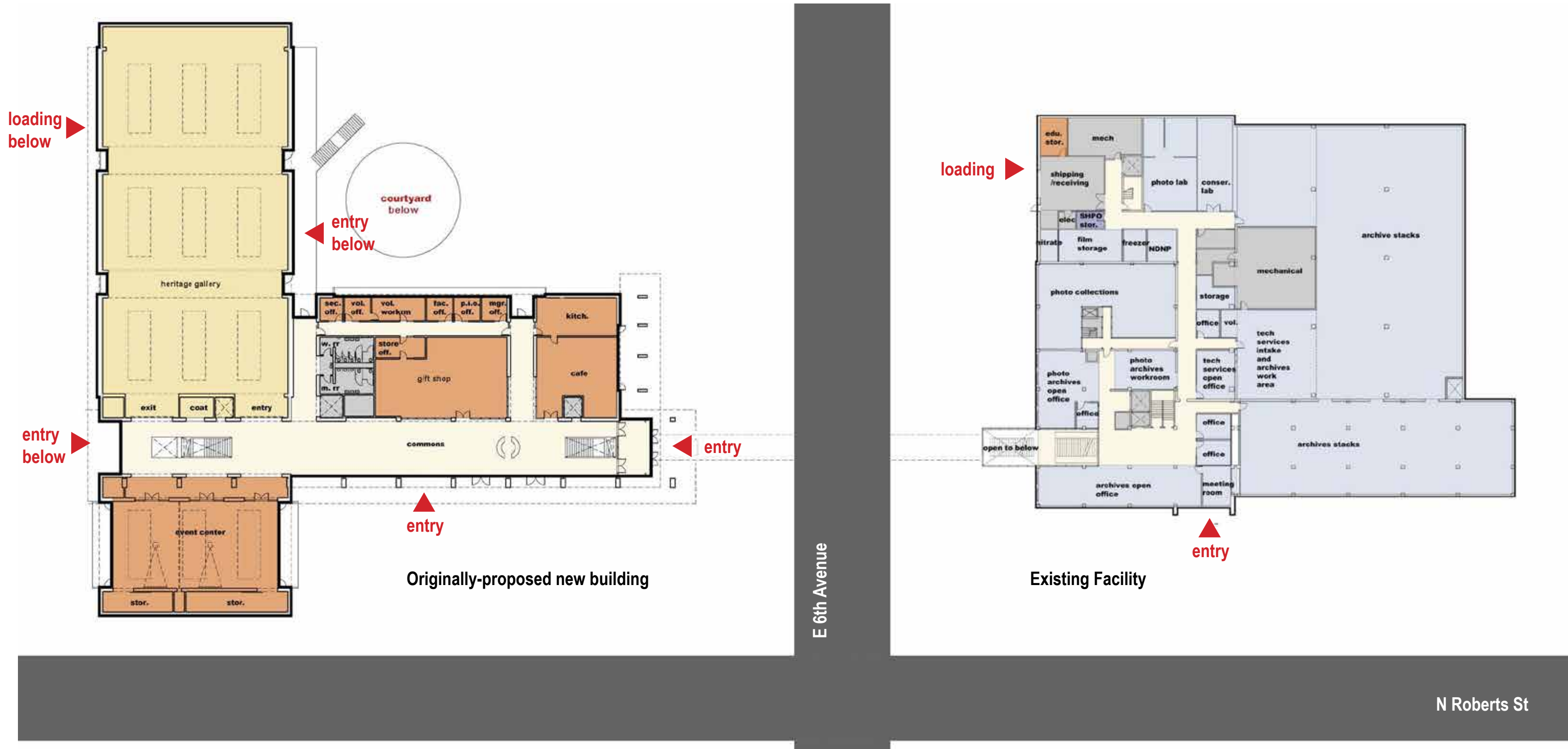
TWO SEPARATE LOADING DOCKS

DOES NOT ADDRESS THE HISTORIC BUILDING

SAFETY CONCERNS CROSSING 6TH STREET

Montana Heritage Center : 2010 Original Design

**Cushing
Terrell**

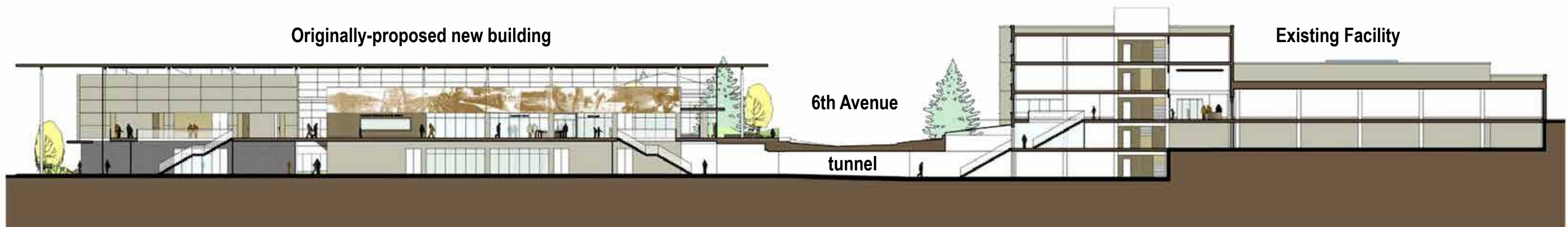


Design Concerns :

TOO MANY ENTRIES TO CONTROL
VISITORS MUST ACCESS MANY LEVELS
ACCESSIBILITY IS NOT VERY FRIENDLY

WAYFINDING IS CONFUSING
GALLERIES ARE FAR APART
CAFE IS HIDDEN FROM ROBERTS STREET

TWO SEPARATE LOADING DOCKS
POORLY INTEGRATED WITH HISTORIC BUILDING
SAFETY CONCERNS CROSSING 6TH STREET



Design Concerns :

CONFUSION OVER MAIN ENTRY

VISITORS MUST ACCESS MANY LEVELS

ACCESSIBILITY IS NOT VERY FRIENDLY

A TUNNEL IS NOT IDEAL

A SKYWAY WILL NOT WORK

WAYFINDING IS CONFUSING

GALLERIES ARE FAR APART

NOT RESPECTFUL OF HISTORIC BUILDING

SAFETY CONCERNS CROSSING 6TH STREET

Montana Heritage Center : 2010 Original Design

**Cushing
Terrell**

An aerial photograph of a town, likely Helena, Montana, with a river winding through it and forested hills in the background. The image is faded to serve as a background for the text.

It's 2020 now.

The team was asked:

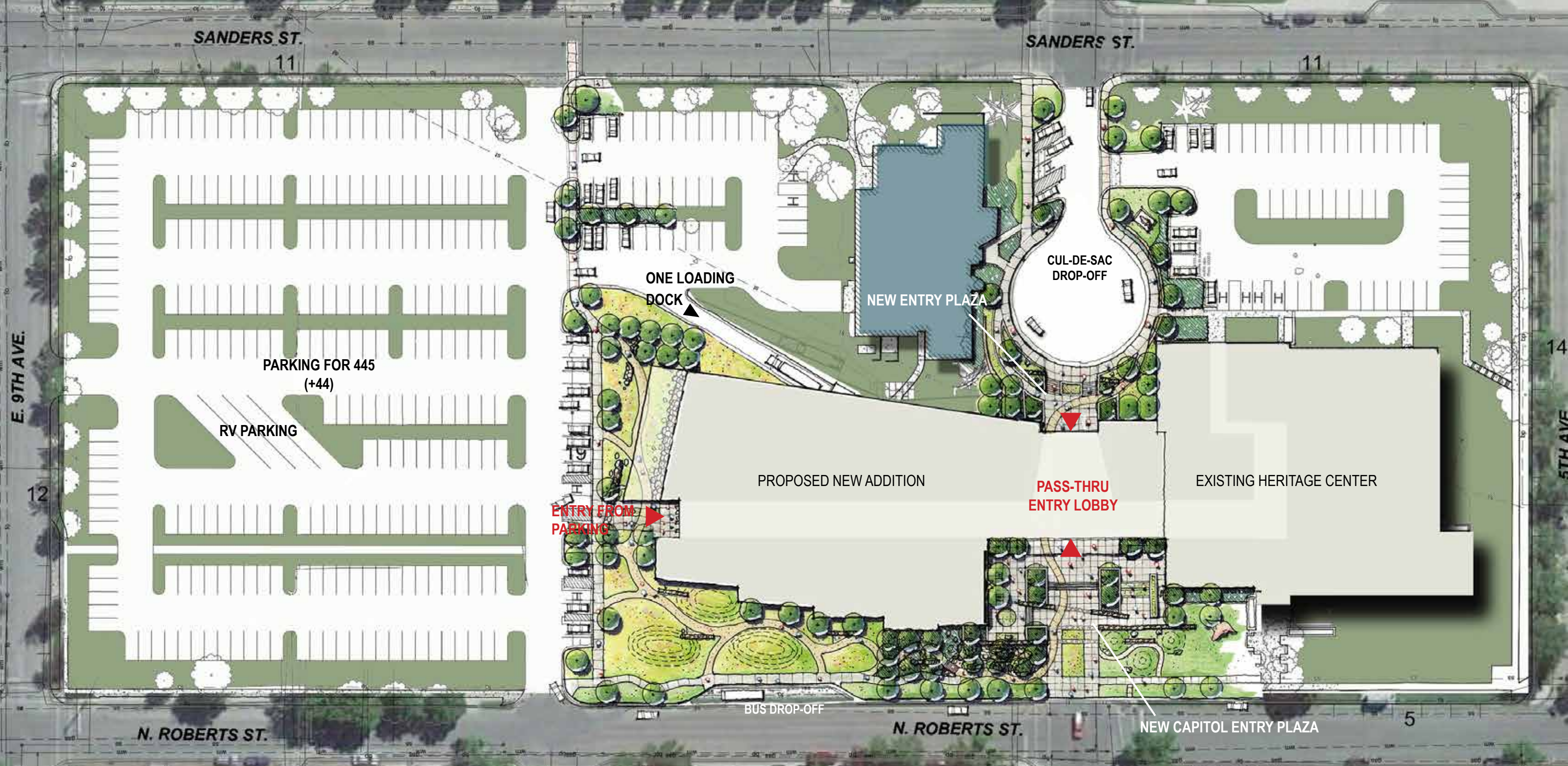
**Can we improve upon
the visitor experience?**



Yes.

We will make it :

- S A F E R
- S I M P L E R
- S M A R T E R
- C O H E S I V E

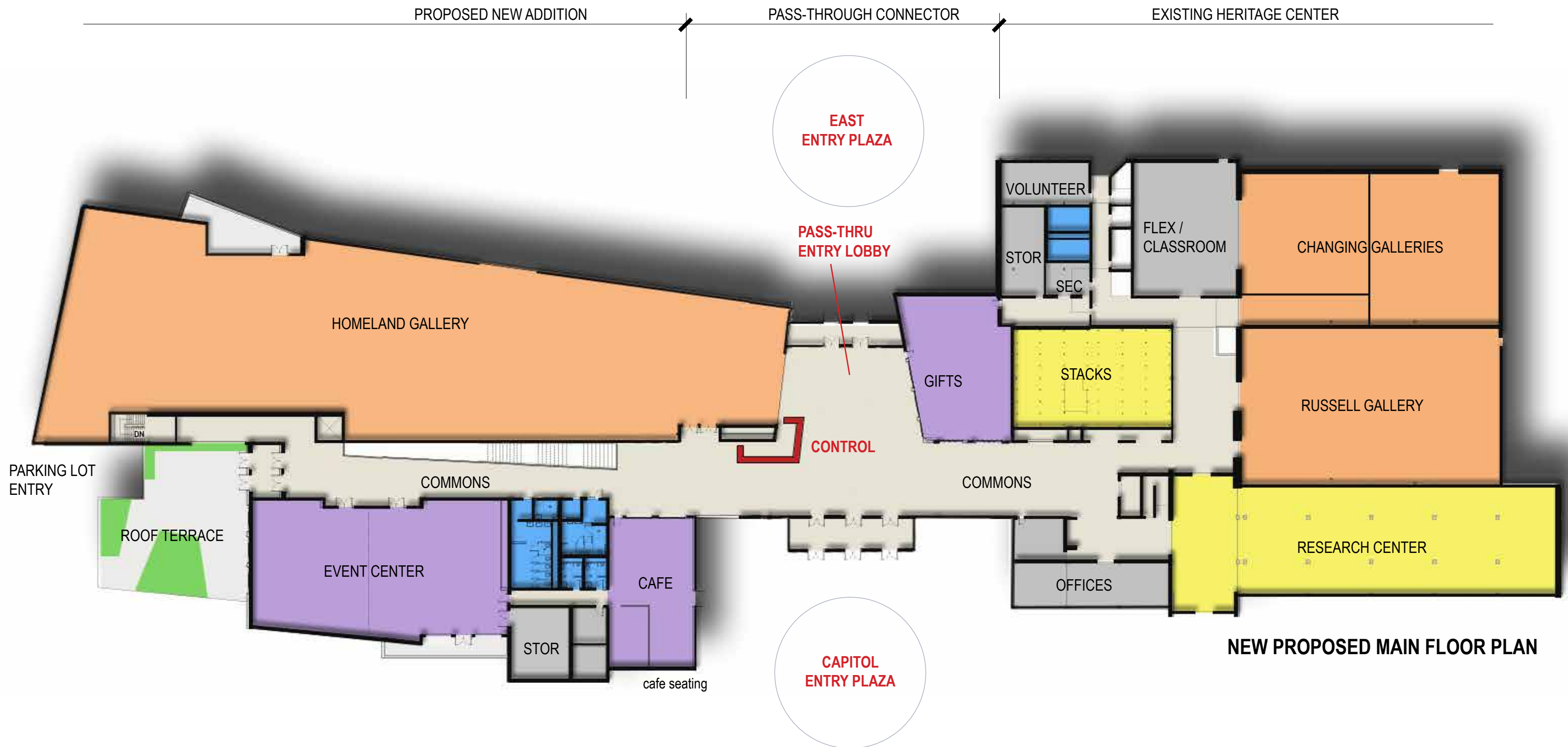


Site Improvements :

- ONE IDENTITY
- INTUITIVE, CONTROLLED ENTRY
- VIBRANT ENTRY PLAZA FACING THE CAPITOL

- A FOCUS UPON THE PEDESTRIAN
- ENHANCED TRAIL CONNECTION
- MORE PARKING & RV PARKING

- CENTRAL DROP-OFFS
- NO UNSAFE STREET CROSSING
- NO DARK TUNNEL

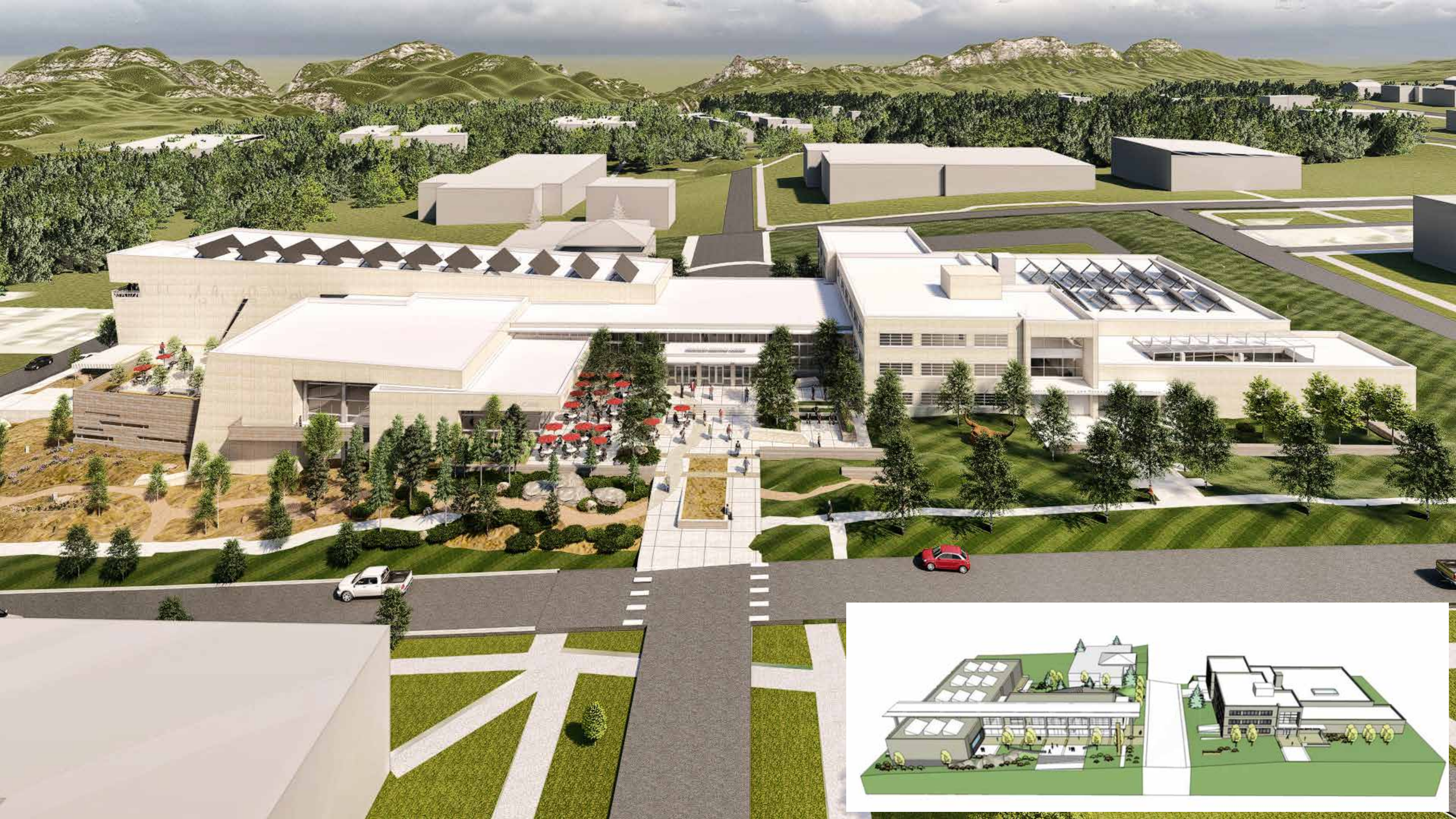


Plan Improvements :

VIBRANT ENTRY PLAZA FACING THE CAPITOL
 INTUITIVE, CONTROLLED ENTRY
 PEDESTRIAN PASS-THRU

VISITORS ALL ON ONE LEVEL (STAFF TOO)
 SIMPLE & INTUITIVE WAYFINDING
 GALLERIES ARE CLOSE TOGETHER

CAFE HAS STREET & PLAZA IDENTITY
 ENHANCES THE TRAIL EXPERIENCE
 CAREFULLY INTEGRATED WITH HISTORIC BUILDING



Montana Heritage Center : 2020 Design Approach

SINGULAR IDENTITY
 INTUITIVE ENTRY
 VIBRANT NEW PLAZA THAT ADDRESSES THE CAPITOL GROUNDS





Montana Heritage Center : 2020 Design Approach

FOCAL POINT

TRAIL PASS-THRU

'SYNERGY' AT THE CAPITOL PLAZA

RESPECTFUL OF HISTORIC BUILDING





Montana Heritage Center : 2020 Design Approach

GATHERING AREA

COMMUNITY ATTRACTION

'TRAIL' THROUGH BUILDING

COHESIVE WITH HISTORIC BUILDING





Montana Heritage Center : 2020 Design Approach



Montana Heritage Center : 2020 Design Approach







Montana Heritage Center : 2020 Design Approach



Montana Heritage Center : 2020 Design Approach



Montana Heritage Center : 2020 Design Approach

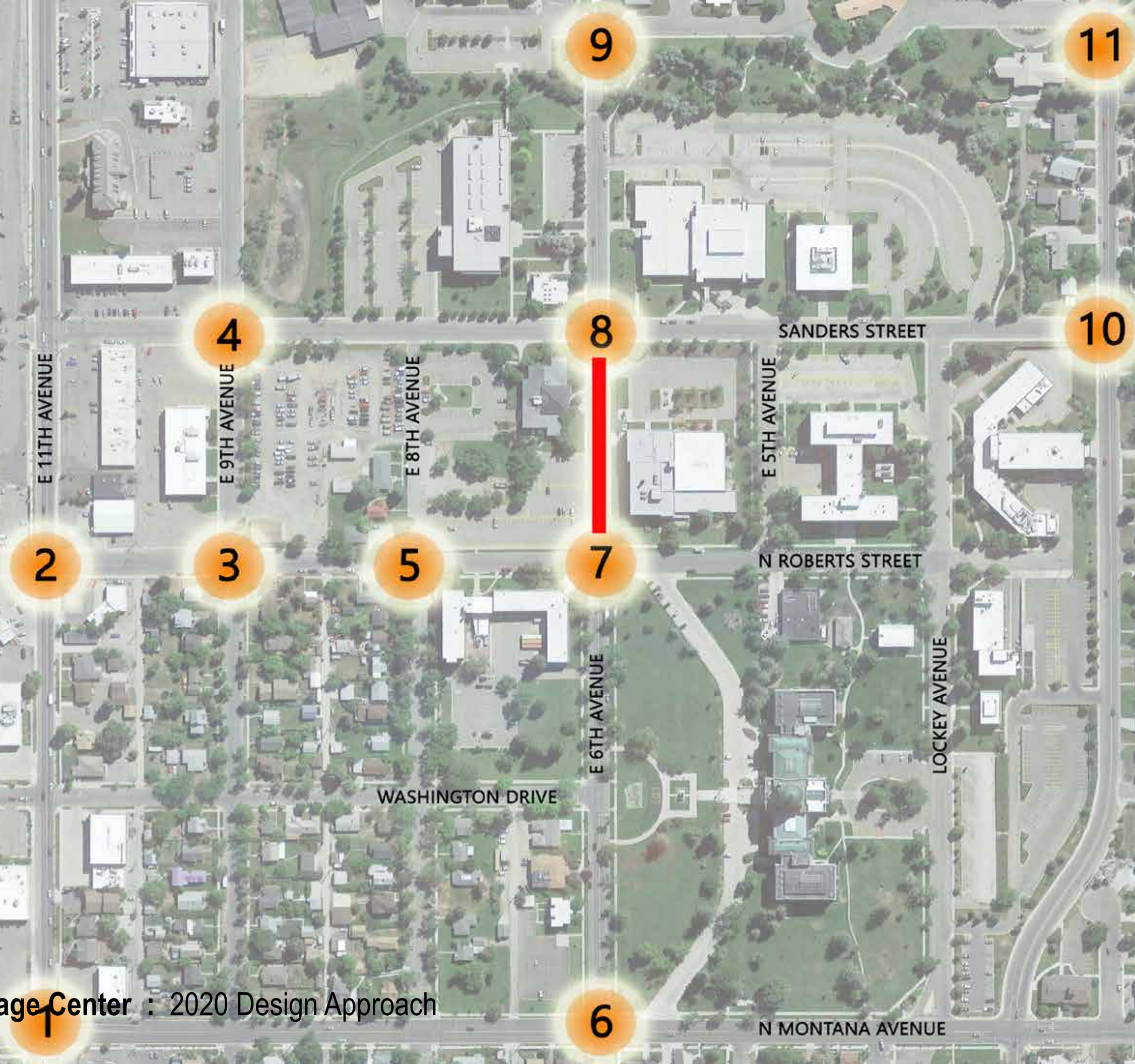


Montana Heritage Center : 2020 Design Approach

Site Infrastructure & Traffic



Montana Heritage Center : 2020 Design Approach



Questions?

Where to find out more:

To learn more about the project please visit our website: www.MontanaMuseum.org

Please provide public comments specific to the traffic study no later than **May 5, 2020**.

Written comments may be submitted to:

Russ Katherman
Architecture & Engineering Division
PO Box 200103
Helena, MT 59620

Or via email to: HeritageCenter@mt.gov