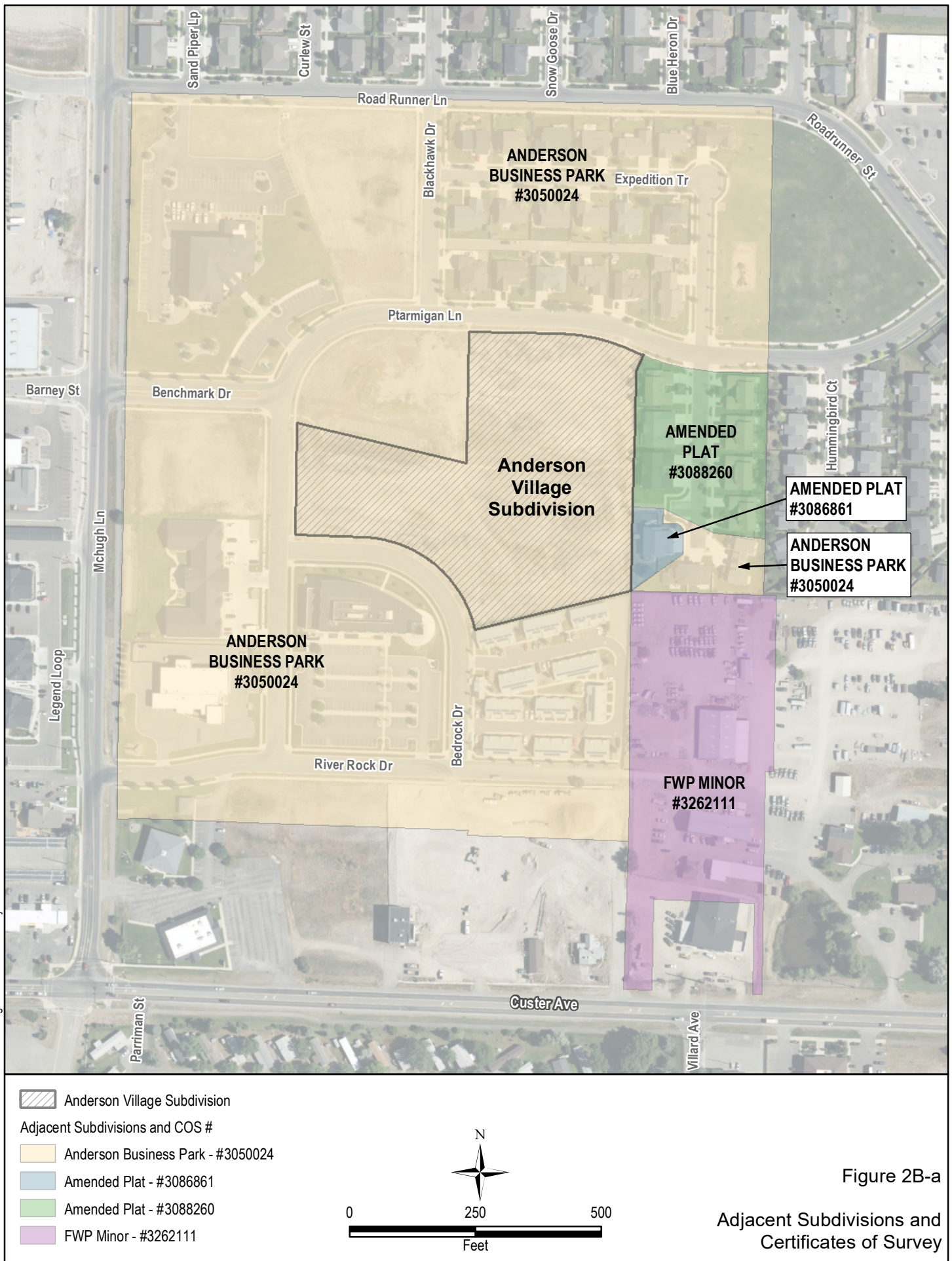


**B-02 – VICINITY MAP
ANDERSON VILLAGE SUBDIVISION
Helena, Montana**

See attached.



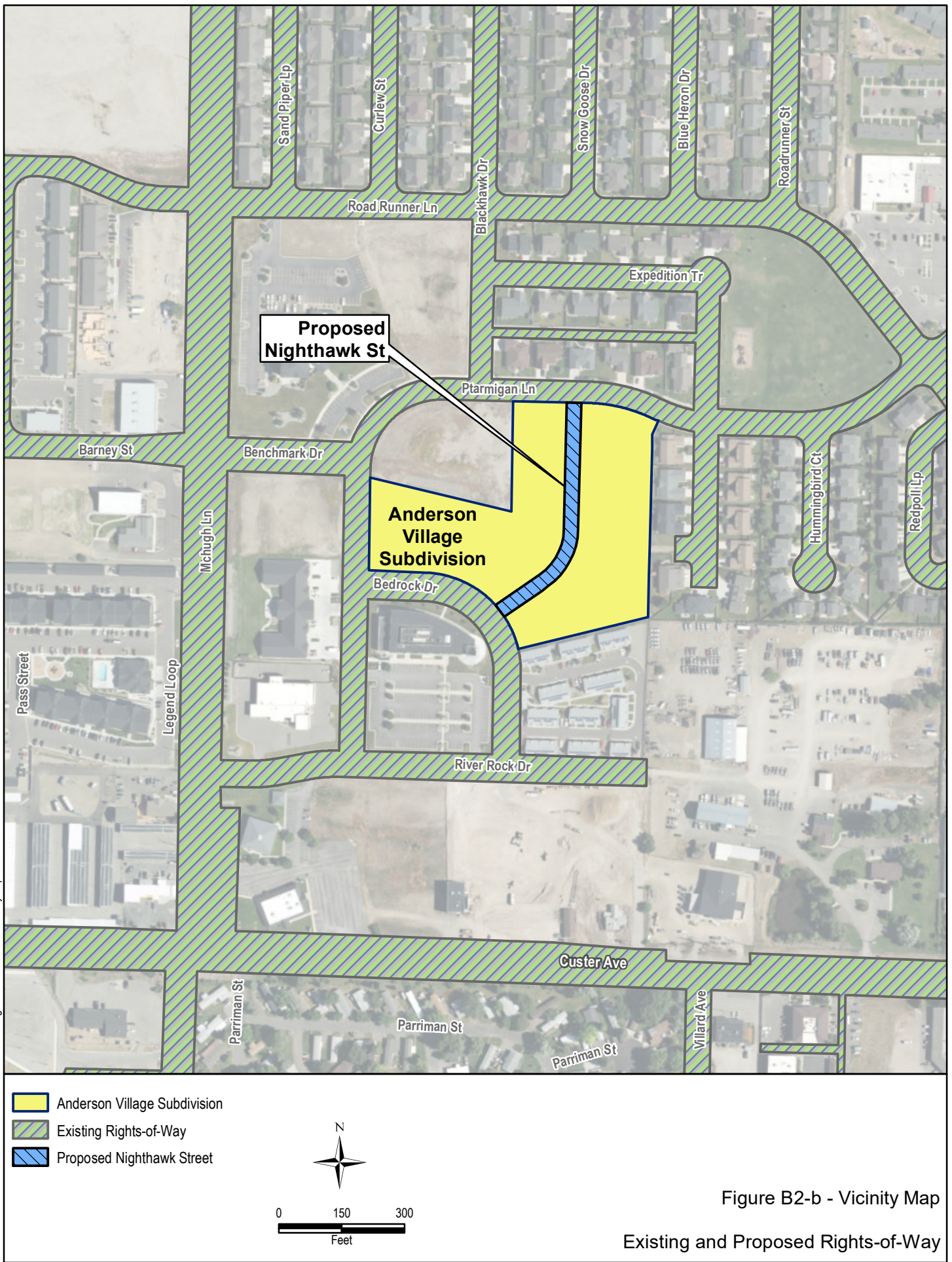
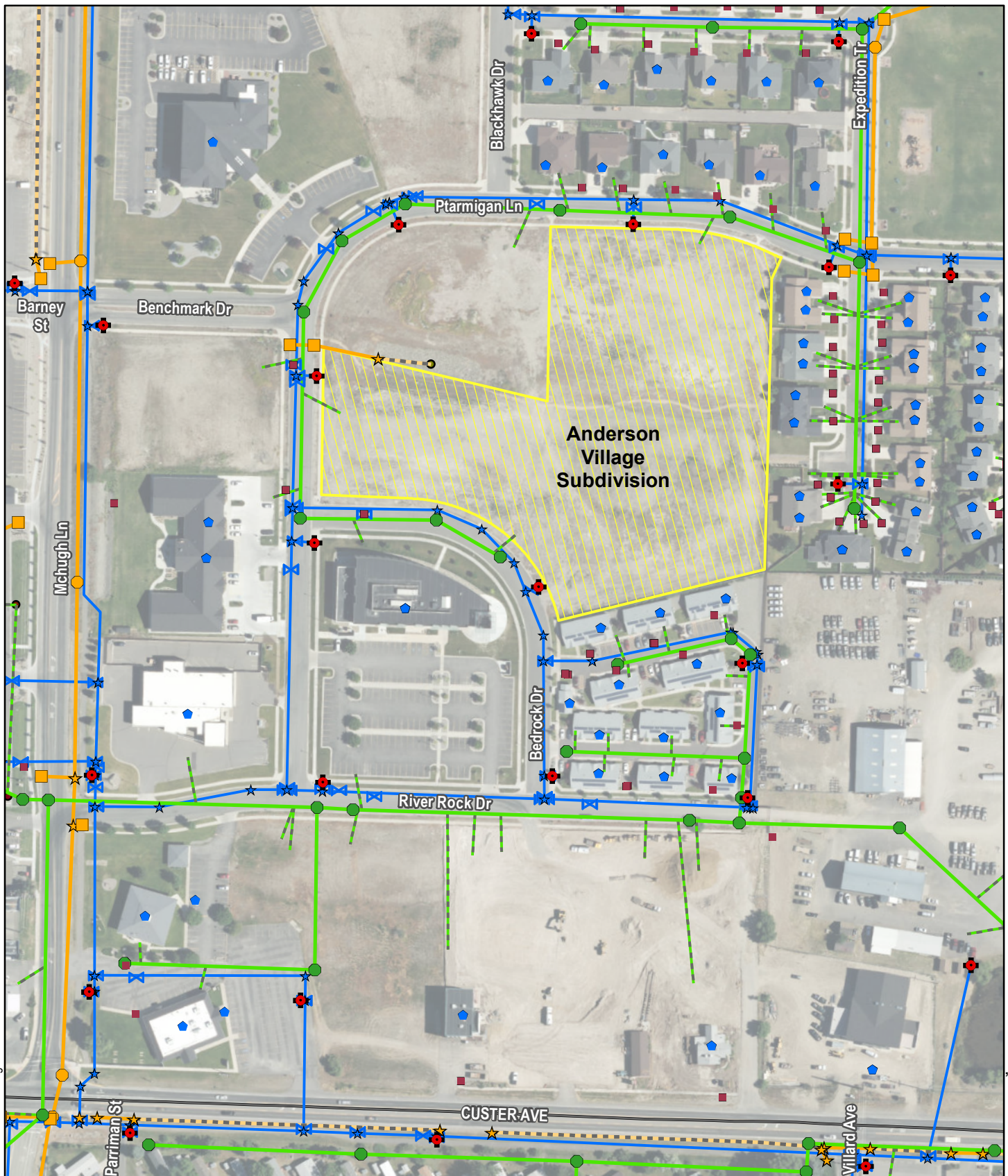


Figure B2-b - Vicinity Map
Existing and Proposed Rights-of-Way

Date: 3/20/2019 Path: F:\sitedev\18216- Anderson Village Subdivision\GIS\Utilities.mxd



UTILITY INFORMATION FROM CITY OF HELENA UTILITY OFFICE, SEPTEMBER 17, 2018

- | | | |
|------------------|-----------------|----------------------|
| ● Fire Hydrants | ● Sewer Manhole | — Storm Lines |
| ■ Curb Boxes | ● Water Meter | — Channel/Open Ditch |
| ■ Storm Inlets | ★ Water Node | — Sewer Mains |
| ● Storm Manholes | ⋈ Water Valves | — Sewer Service Line |
| ★ StormNode | — Water Lines | |

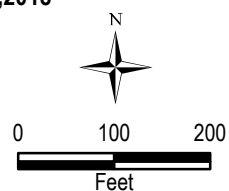
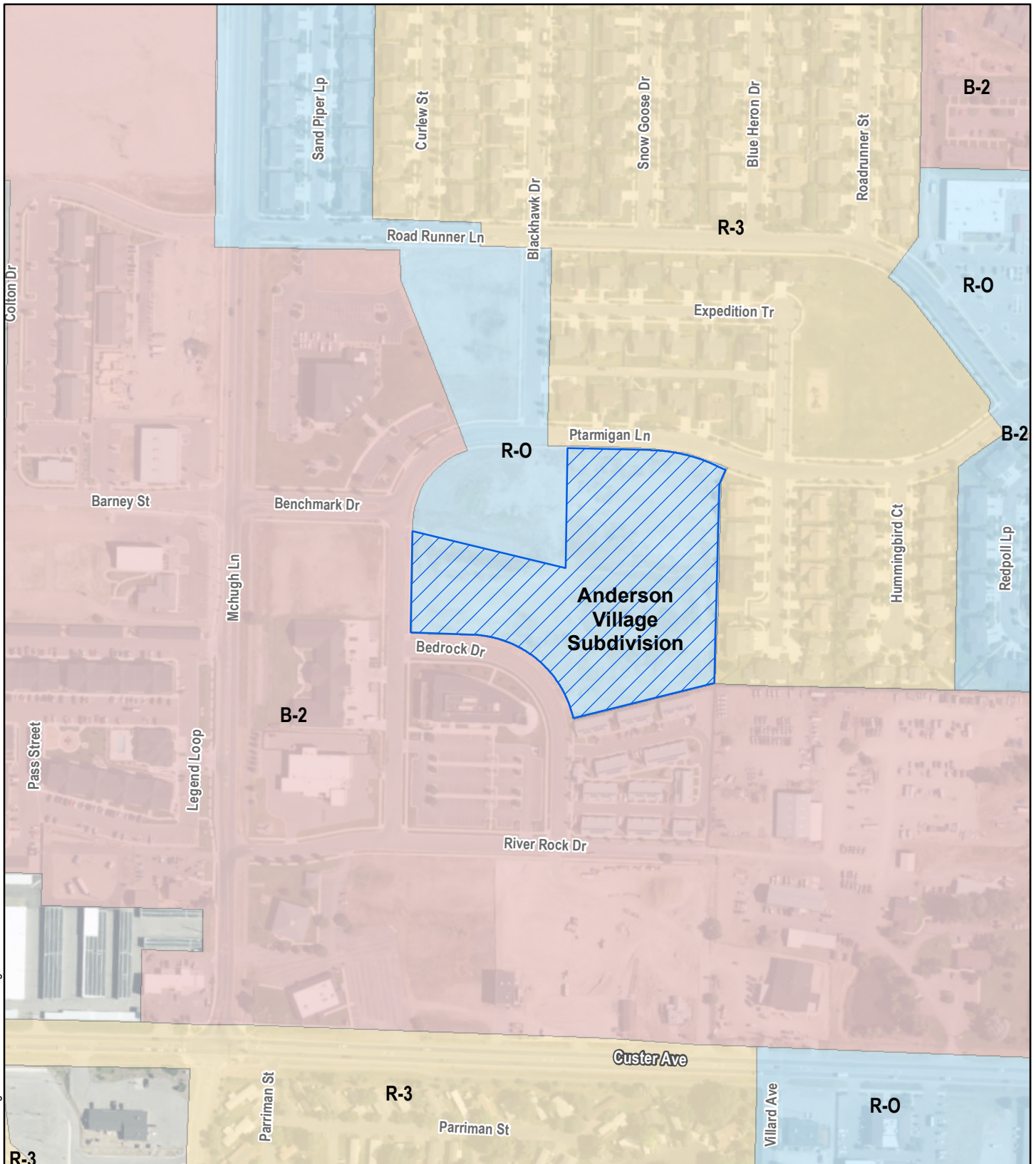






Figure B2-c
Existing City Utilities



-  Anderson Village Subdivision
- City of Helena Zoning
-  B-2 General Commercial District
-  R-3 Residential District
-  R-O Residential Office District

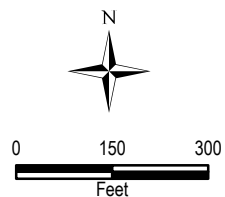


Figure B2-d
Zoning Map