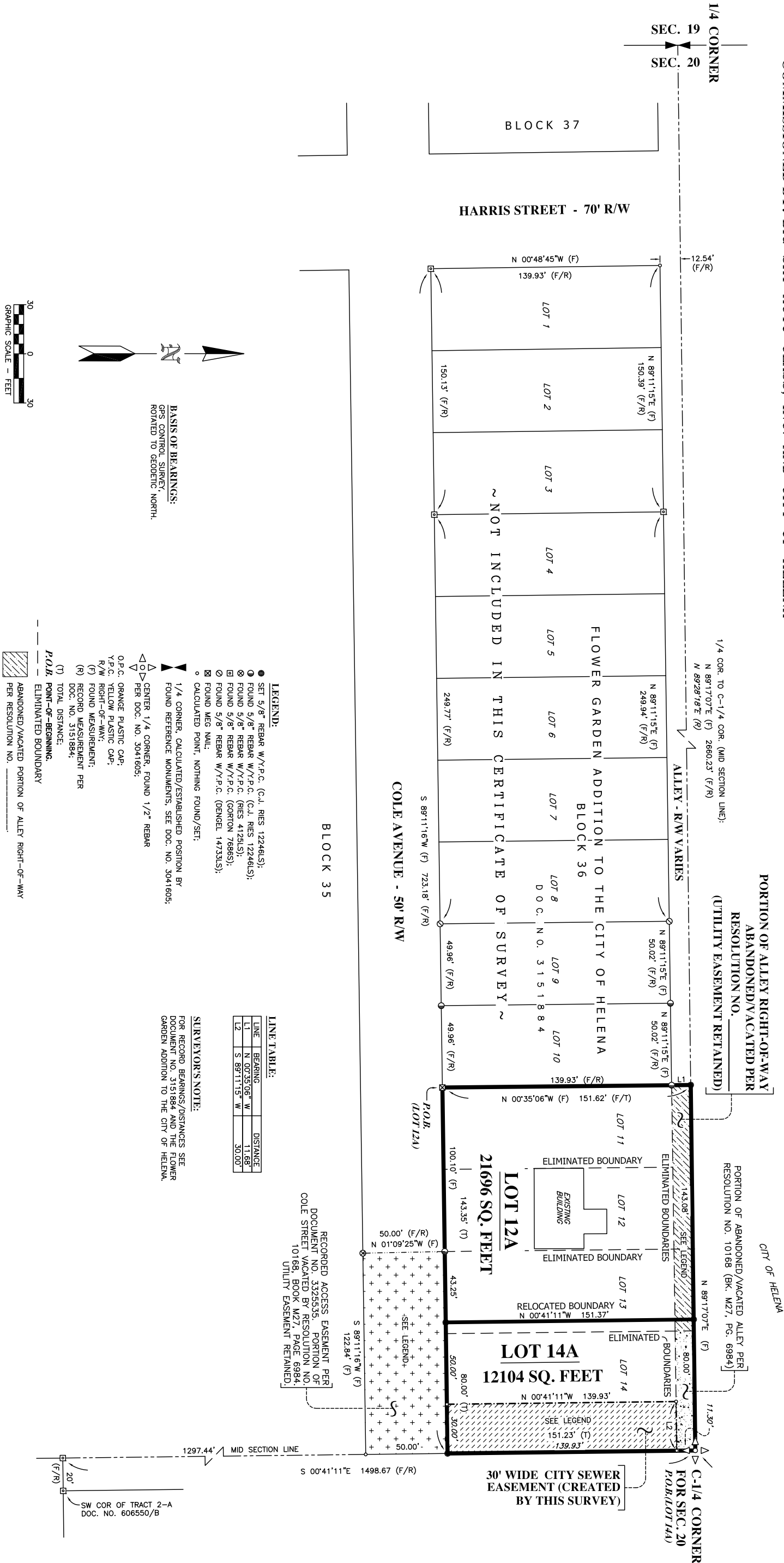


AMENDED PLAT

(AMENDING LOTS 11, 12, 13, & 14, BLOCK 36 OF THE FLOWER GARDEN ADDITION TO THE CITY OF HELENA)

PURPOSE: (1) TO ABANDON/VACATE A PORTION OF THE ALLEY RIGHT-OF-WAY LOCATED NORTH OF LOTS 11, 12, AND 13 IN BLOCK 36 OF THE FLOWER GARDEN ADDITION TO THE CITY OF HELENA (UTILITY EASEMENT RETAINED) PER RESOLUTION NO. _____; (2) BOUNDARY RELOCATION/AGGREGATION; (3) CREATE A 30 FOOT WIDE CITY SEWER EASEMENT LOCATED WITHIN LOT 14 OF BLOCK 36 OF THE FLOWER GARDEN ADDITION TO THE CITY OF HELENA; ALL AS SHOWN/DESCRIBED ON THIS AMENDED PLAT.

COMMISSIONED BY: BIG SKY AUTO CLASS, INC. AND CITY OF HELENA



LINE	BEARING	DISTANCE
L1	N 00°35'06" W	11.68'
L2	S 89°11'15" W	30.00'

SET 5/8" REBAR W/Y.P.C. (C.J. RIES 12246LS);
 FOUND 5/8" REBAR W/Y.P.C. (C.J. RIES 12246LS);
 FOUND 5/8" REBAR W/Y.P.C. (C.J. RIES 1212LS);
 FOUND 5/8" REBAR W/Y.P.C. (GORTON 7686S);
 FOUND 5/8" REBAR W/Y.P.C. (DENGEL 1473LS);
 FOUND M/G NAIL;
 CALCULATED POINT, NOTHING FOUND/SET;

SURVEYOR'S NOTE:

FOR RECORD BEARINGS/DISTANCES SEE
DOCUMENT NO. 3151884 AND THE FLOWER
GARDEN ADDITION TO THE CITY OF HELENA.

BASIS OF BEARINGS:
GPS CONTROL SURVEY,
ROTATED TO GEODETIC NORTH.


P.O.B. POINT-OF-BEGINNING.
— — ELIMINATED BOUNDARY

ABANDONED/VACATED PORTION OF ALLEY RIGHT-OF-WAY
PER RESOLUTION NO. _____.

VACATED PORTION OF ALLEY RIGHT-OF-WAY PER
RESOLUTION NO. 10168 (BOOK M27, PAGE 6984)

30' WIDE CITY SEWER EASEMENT
(CREATED BY THIS SURVEY).

ACCESS EASEMENT PER DOC. NO. 3325535;
PORTION OF COLE STREET VACATED BY RESOLUTION NO. 1068
(BOOK M27, PAGE 6984); UTILITY EASEMENT RETAINED.

1/4	SEC.	T.	R.
	20	10N	3W
